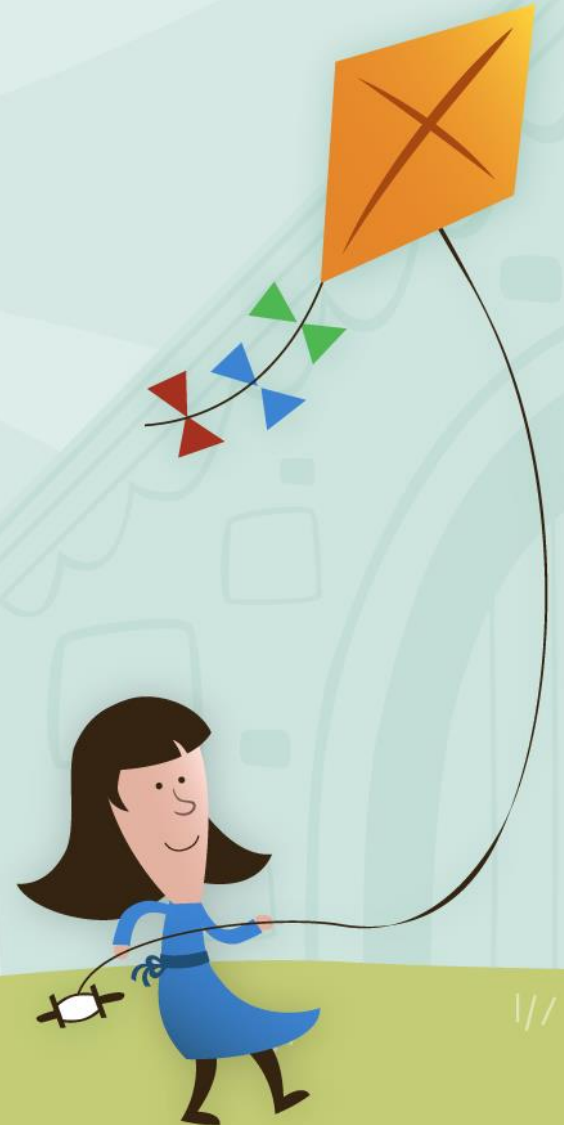


Building Child Care Capacity in Kosciusko County.



Our KLA Team



**Kathryn
Fields**



**Sherry
Searles**



**Travis
Neff**

**Honorary mention:
Kacey Anderson**



Executive Summary

Kosciusko County has a desperate need for childcare

- **Childcare dessert**
 - Only one childcare seat is available for every three needed.
 - http://datacenter.earlylearningin.org/deserts-hubs.html#Fifth_Sub_Point_1



Executive Summary

Childcare needs effect:

- Workforce development
- Quality of care and education



Our group partnered with:

- The Child Care and Early Learning Coalition of Kosciusko County; and



Executive Summary

Early Learning Indiana provides Kosciusko County a \$75,000 grant to:

- **Increase access to high quality childcare**
- **To benefit children 6 months to 6 years of age**

Our initial plan:

- **Partner with community members; and**
- **Place a high quality childcare center in Claypool.**



Executive Summary

After months of planning, we failed to:

- **Find a provider of care**
- **Find a suitable space to lease**
- **Secure funds needed to make the childcare center sustainable**



Executive Summary

Early Learning Indiana allowed us to adapt our plan:

- **To open an early learning center in:**
 - Syracuse and North Webster
- **Wawasee Community Schools:**
 - Became the provider of care; and
 - Provided the locations for the childcare center.
- **Additional funds were secured from:**
 - the Dekko Foundation; and
 - Kosciusko County Community Foundation.



Kosciusko's Childcare Problems

3,000 children under the age of 5 who have working parents

- **Only 1,200 known childcare seats are available**
 - **Known childcare centers include:**
 - Licensed centers
 - Licensed homes
 - Registered ministries
 - Exempt school programs



Kosciusko's Childcare Problems

Results of the rigorous standards of childcare

- **Not enough regulated programs**
- **Children placed in unregulated neighbor care**
 - Needs of the children remain unmet



Kosciusko's Childcare Problems

Children learn more during the first five years of their lives than any other time

- **The science of early brain development underscores the importance high-quality childcare, which effects**
 - emotional and physical health, social skills
 - cognitive development



When these high-quality environments are not available to working parents in Kosciusko County, everyone eventually feels the effects.



Main objectives

- **To increase the number of childcare seats in Kosciusko County**
- **Partner with organizations to provide sustainable, high quality programs**
- **Duplicate the early learning program to bring additional childcare to Kosciusko.**



Our Solution

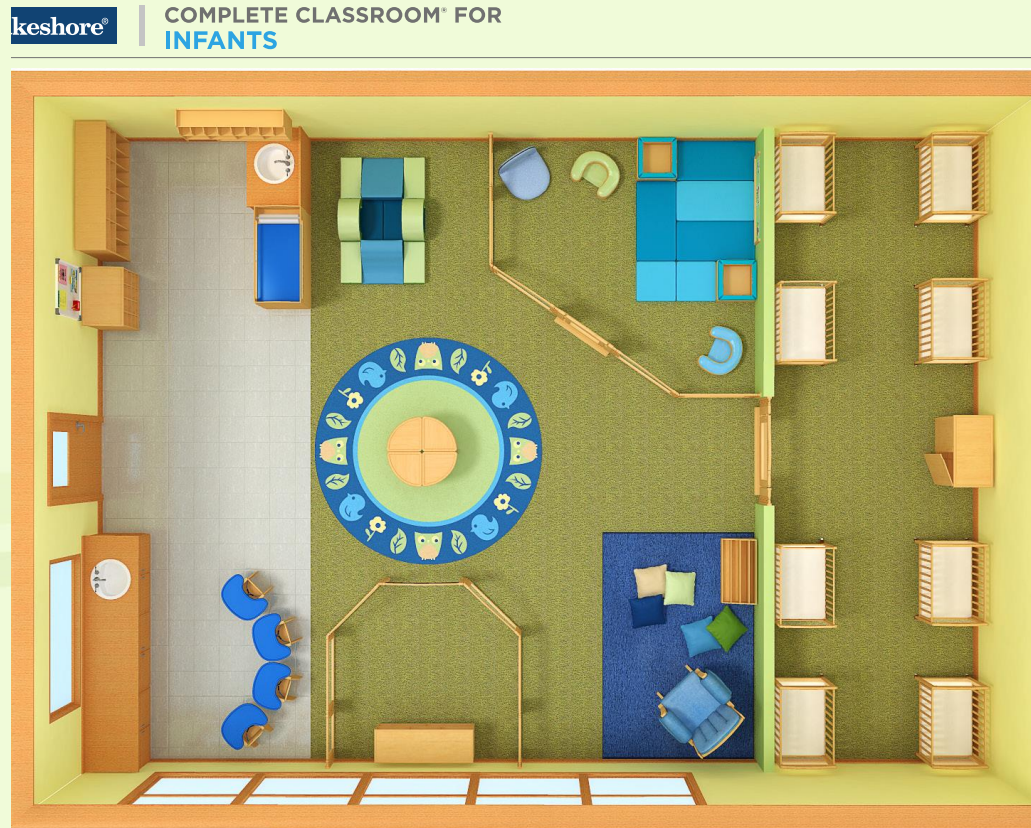


Infants: 0-12 months

(Capacity 8)

Non-mobile Play

- Discovery
- Block Play
- Library
- Sleeping Area



- Gross Motor
- Mealtime
- Cubbies & Communication
- Changing Station
- Entry to Sleeping Area



© Lakeshore REPRESENTATION ONLY. ROOM DIMENSIONS OR MEASUREMENTS MAY VARY. www.LakeshoreLearning.com/classroom Phone: 800-421-5354



Preschool

(Capacity 20)



- Sensory Center
- Arts Center
- Mealtime
- Block Play
- Library
- Personal Space, Cubbies, Communication & Naptime

- Dramatic Play Center
- Math Center & Manipulatives
- Science & Discovery Center
- Music & Listening Center
- Writing & Language Arts Center



Timeline

March 2020

- **Finalize Locations/Programs**
- **Develop budget**
- **Develop Wawasee High School student internship program**
- **Submit grants for funding (DEKKO, Community Foundation, K21 Foundation)**



Timeline

April 2020

- **Write program policies, procedures, and job descriptions.**
- **Advertise programs**
- **Hire director**



Timeline

May 2020

- **Purchase curriculum.**
- **Purchase all equipment, furniture and toys.**
- **Enroll families**



Timeline

June-July 2020

- **Set up classrooms.**
- **Hire additional staff.**
- **Train staff**



Timeline

August 2020

- **Open programs on first day of school in mid-August**



Projected Budget

Date April 1, 2020-July 31, 2021



Projected Budget

• Revenue

Desert Grant – Received	\$75,000
Wawasee Community Schools (In-Kind rent, 10 months)	\$40,000
Tuition for childcare program at Syracuse Elementary based on 100% capacity	\$115,625
Tuition for childcare program at North Webster Elementary based on 75% capacity	\$138,750
Donation from sale of former elementary school	\$25,000
DEKKO Foundation – will apply (curriculum, training, coaching)	\$6,000
Kosciusko County Community Foundation – will apply (start-up furniture, equipment, supplies)	\$30,000
USDA Food Program Reimbursement for child care center/early learning program	\$32,859

• Total Revenue

\$463,234.00



Projected Budget

- **Start up Expenses**

Furniture, equipment, supplies for 2 rooms for childcare program	\$14,462
Furniture, equipment, supplies for 2 rooms for early learning program	\$15,330
Program Development Administration	\$7,500



Projected Budget

• Operating Expenses

Director Wages, Benefits, Payroll Taxes	\$61,575
Early Learning Lead Teacher	\$17,592
Early Learning Assistant(s) – 2	\$35,185
Childcare Lead Teacher Infant/Toddler	\$17,592
Childcare Lead Teacher Pre-K	\$17,592
Childcare Assistants (2)	\$35,185
Consumable Supplies Childcare	\$3,000
Consumable Supplies Early Learning	\$3,000
Food Vending Services through school corporation for Childcare	\$18,500
Food Vending Services through school corporation for Early Learning	\$22,200
Rent	\$40,000
Food Vending Services through school corp	\$45,000
Curriculum, Training, Coaching	\$6,000

• Total Expenses

\$ \$359,713.00



Conclusion

- **Use available space at no cost to the program**
- **Partner with local businesses and organizations**
- **Reduce overhead costs and**
- **Provide expertise to the early learning director.**



Conclusion

- **Develop and duplicate this model in order to:**
- **Provide quality childcare to all of Kosciusko**
- **Create good paying childcare jobs**
- **Ensure our children are provided for for years to come.**



When Kosciusko comes together...

- Care becomes affordable
- Teachers receive a living wage
- productivity increases
- Children receive the care they need to succeed!



Citations:

- Childcare desert

- <http://datacenter.earlylearningin.org/deserts-hubs.html#Fifth Sub Point 1>
- <https://strongnation.s3.amazonaws.com/documents/522/3c5cdb46-eda2-4723-9e8e-f20511cc9f0f.pdf?1542205790&inline;file%20name=%22The%20Economic%20Impacts%20of%20Insufficient%20Child%20Care%20on%20Working%20Families.pdf%22>
- <http://www.kchamber.com/get-involved/launch-pad/>



Citations:

- Childcare regulations
 - <https://www.indystar.com/story/news/investigations/2014/11/10/5-day-care-providers-who-repeatedly-violated-state-law/18792925/>
 - <https://developingchild.harvard.edu/resources/inbrief-science-of-ecd/>

