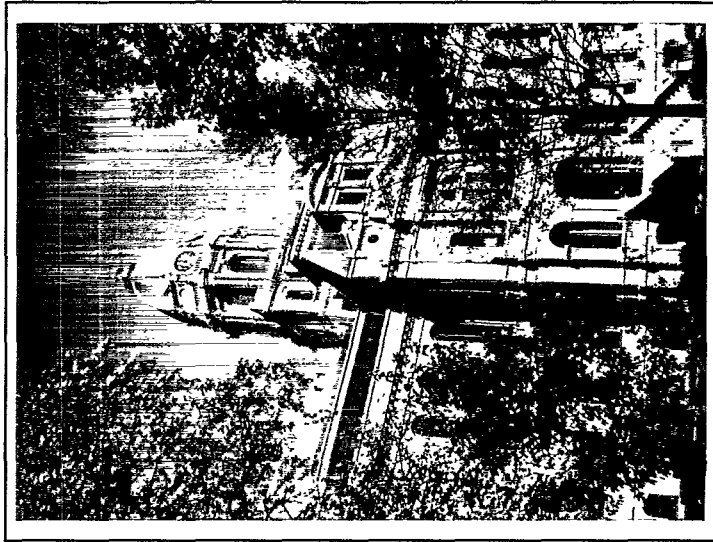


Kosciusko Leadership Academy

The Kosciusko Leadership Academy (*KLLA*) was founded in 1982. The purpose of *KLLA* is to prepare community leaders to assume roles in various agencies, civic and citizen organizations in Kosciusko County.

The *KLLA* Board of Trustees consists of community leaders. The Executive Committee consists of: President, Vice-President, Secretary/Treasurer, Curriculum, Public Information, Selection, Alumni Relations, Advisor and Moderator. Members are selected each year. This Committee insures that the activities of *KLLA* are conducted in a professional and organized manner.



County Government

Sample of Topics Covered

City, County, State Government
Agriculture
Religion
Law Enforcement
Education
Health Care
Human Services
Politics
Fulfilling the Leadership Role
Effective Leadership Communication

Topics are covered at various locations in Kosciusko County

Kosciusko Leadership
Academy White Papers
2000

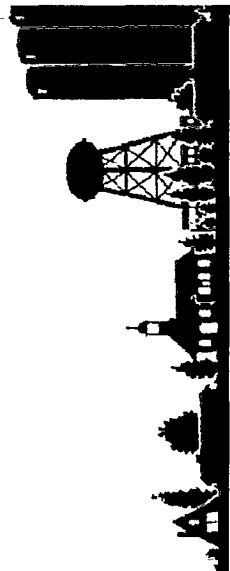
Designed & Created By

Sandy Harrell
Connie Herman
Mary Titus
KLLA Class of 2000

K00-04
2000
C.1

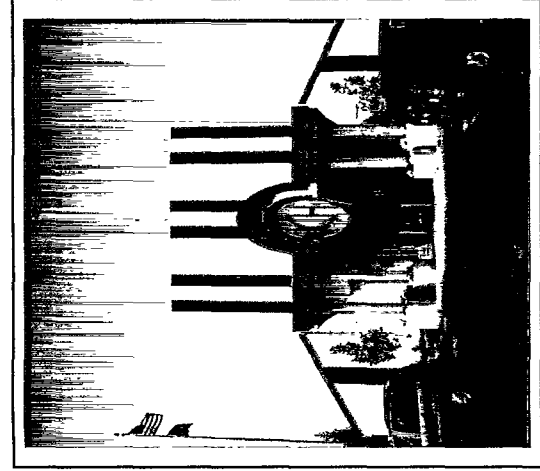
Kosciusko Leadership Academy

KLLA
Building
Community
Leaders



Goals of the Academy

- ◆ to develop future leaders through education and inform through study of economics, government, agriculture, industry and leadership communication.
- ◆ to encourage Academy members to volunteer for service in agencies and civic organizations.
- ◆ to provide a networking system between K&LA class/alumni members.
- ◆ to present a "White Paper" or complete a project at years end.



Medical Care

Application and Tuition

Applicants can be sponsored by their employer, by another organization, or by themselves. K&LA members are required to attend all of the classes. Classes are held every other week at various locations throughout the county. K&LA members will complete a "White Paper" or project outside of scheduled class times.

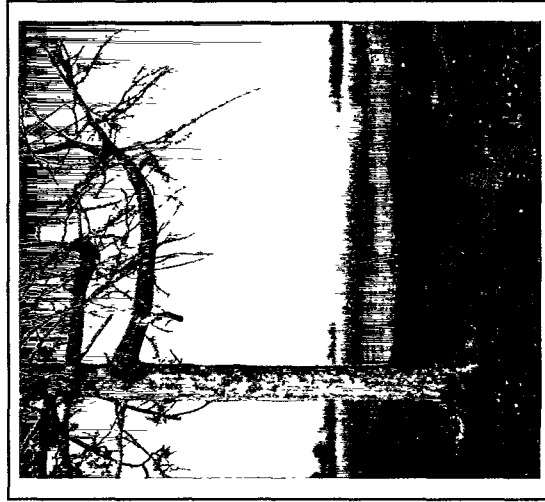
Tuition for the program is determined each year. Employers or individuals may pay for tuition. One scholarship per year is also available.

The Selection Process

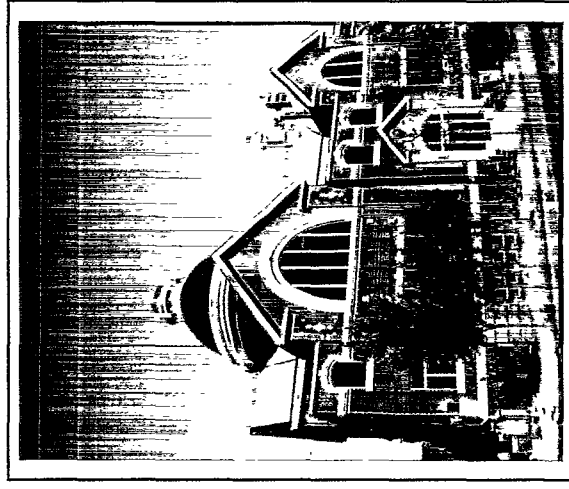
The K&LA Selection Committee seeks a cross-section of the community: men and women from different careers, education, political, social, cultural and community backgrounds.

Each member:

- ◆ will have demonstrated the ability to achieve personal, as well as, professional goals.
- ◆ will have available time and resources to commit to K&LA classes and community service.
- ◆ will have demonstrated personal commitment to the Kosciusko county area.



Agriculture



Religion